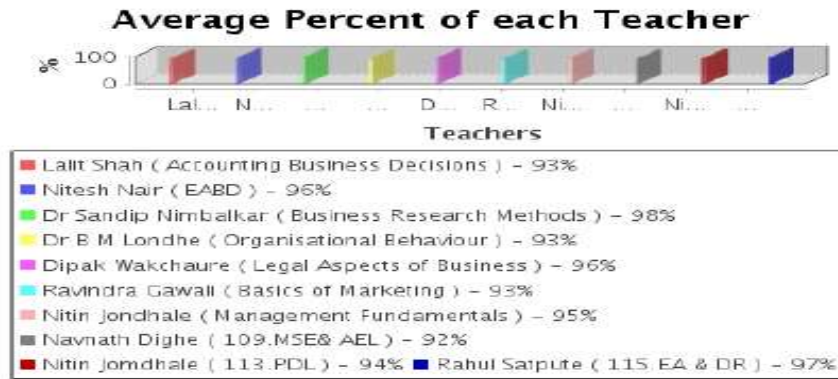


Feedback-MBA-I-Sem-I (2018-19) –Div-A



Feedback-MBA-I-Sem-I (2018-19) –Div-B



Feedback-MBA-II-Sem-III (2018-19) –Div-A

■ Ravindra Gawali (Enterprise Performance Management) – 94%
■ Nitin Jondhale (Startup & New Venture Management) – 89%
■ Dr Sandip Nimbalkar (CMR) – 98%
■ Navnath Dighe (Consumer Behaviour) – 85%
■ Dr Sandip Nimbalkar (Integrated Marketing Communication) – 98%
■ Rahul Satpute (Product Management) – 97%
■ Rahul Satpute (Strategic Management) – 95%
■ Navnath Dighe (Customer Relationship Management) – 86%
■ Rahul Satpute (Strategic Brand Management) – 97%
■ Prof.L.D.Shah (Financial System of India, Markets and Services) – 94%
■ Prof.L.D.Shah (Banking Operation 1) – 94%
■ Prof.N.M.Nair (Direct Taxation) – 91%
■ Prof.N.M.Nair (Corporate Finance) – 91%
■ Prof. Mrs.Sulbha G.Gunjal (Strategic Cost Management) – 90%
■ Prof Mrs Sulbha Gunjal (Rural Financial Institution) – 90%

Feedback-MBA-II-Sem-III (2018-19) –Div-B

Average Percent of each Teacher

■	Rahul Satpute (Strategic Management)	- 94%
■	Ravindra Gawali (Enterprise Performance Management)	- 90%
■	Nitin Jondhale (Startup & New Venture Management)	- 89%
■	Prof. L.D.Shah (Financial System of India, Markets and Services)	- 93%
■	Prof. L.D.Shah (Banking Operation 1)	- 92%
■	Prof. N.M. Nair (Direct Taxation)	- 95%
■	Prof. N.M. Nair (Corporate Finance)	- 95%
■	Nitin Sopan Bhand (Human Resource Accounting & Compensation Manager)	- 94%
■	Nitin Sopan Bhand (HR Audit)	- 94%
■	D B Wakchaure (L & SSL)	- 93%
■	D B Wakchaure (Employee, Health & Safety)	- 91%
■	Prof. Mrs. Sulbha G. Gunjal (Strategic Cost Management)	- 79%
■	Prof. Mrs. Sulbha Gunjal (Rural Financial Institution)	- 77%
■	Prof. D.B. Wakchaure (Outsourcing of HR)	- 96%
■	Prof. Mrs. Sulbha G. Gunjal (PRCC)	- 84%